



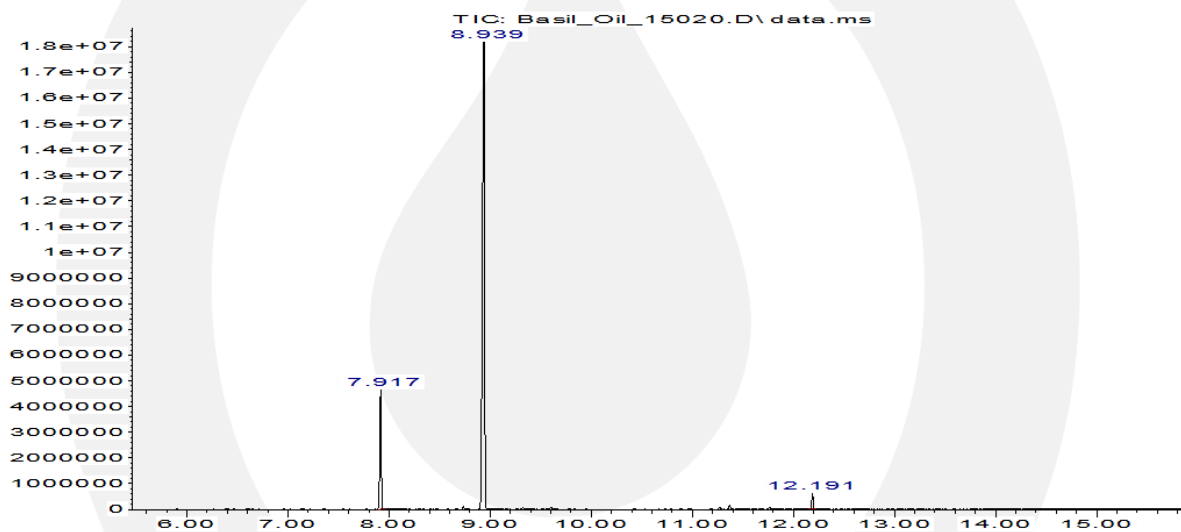
THE OIL FAMILY

TYPICAL GC STATEMENT

PRODUCT NAME: **BASIL (METHYL CHAVICOL TYPE), ESSENTIAL OIL**

PRODUCT CODE: K0049

Abundance



Time →

Peak	RT Mins	Compound	Area	Peak start	Peak end	%
1	7.917	Linalool	0.017	49404431	7.879	14.2
2	8.939	Methyl chavicol	0.024	286593010	8.871	82.5
3	12.191	cis- α -Bisabolene	0.016	6095839	12.148	1.8

The attached information is considered to be correct at the time the client received this information. Please be aware that detail can change and we encourage clients to update their records with O&3 regularly by visiting www.oand3.com. The information is not and should not be considered a guarantee or warranty, or a part of our contractual or other legal obligations. The information is not to be disclosed to others, reproduced or transmitted in whole or in part without permission from O&3. It is the responsibility of the client to ensure the safety of the final product containing this ingredient. Please carry out additional testing if necessary.